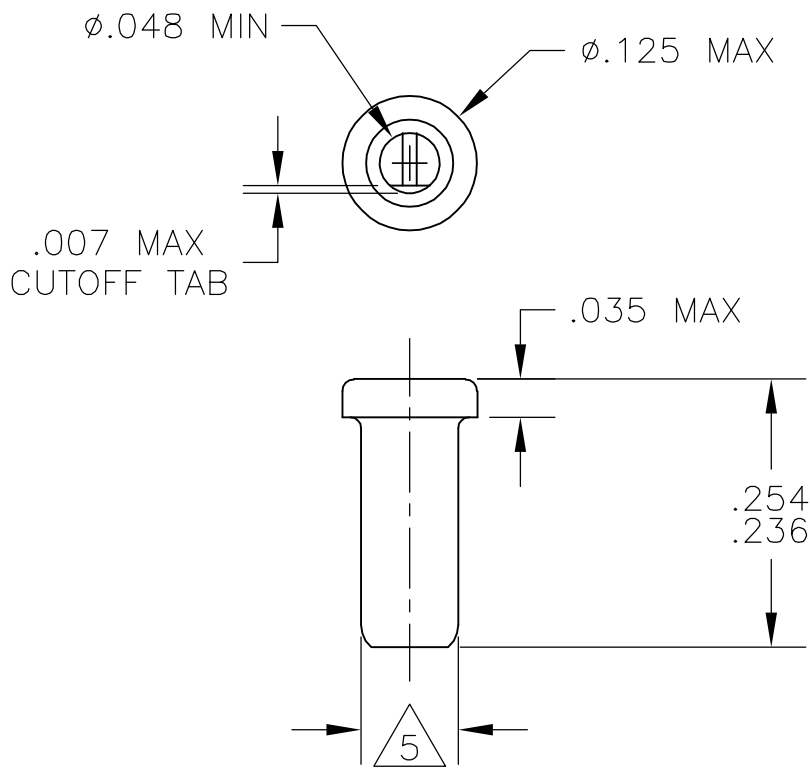


THIS DRAWING IS UNPUBLISHED. RELEASED FOR PUBLICATION
 © COPYRIGHT - BY TYCO ELECTRONICS CORPORATION. ALL RIGHTS RESERVED.

| LOC | DIST | REVISIONS | | | | | |
|-----|------|-----------|-----|---------------------------|---------|-----|------|
| AG | 67 | P | LTR | DESCRIPTION | DATE | DWN | APVD |
| | | | A | REVISED PER ECO-06-001742 | 31JAN06 | JDP | JGH |

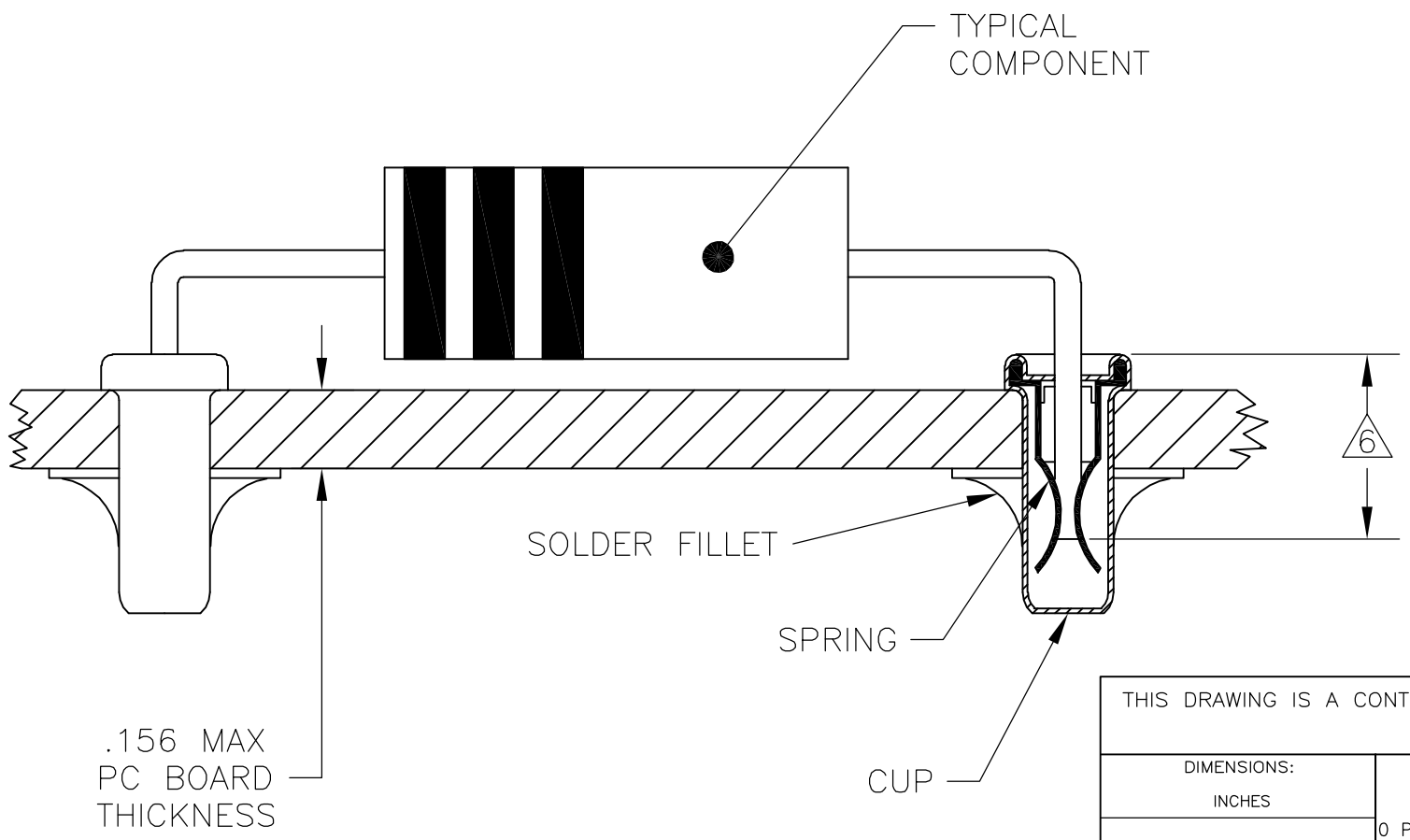


- 1 MATERIALS:
CUP: COPPER PER ASTM B 152
SPRING: BERYLLIUM COPPER PER ASTM B 194
- 2 TIN PLATE PER ASTM B 545 .000080 MIN THICK.
- 3 GOLD PLATE PER ASTM B 488 .000030 MIN THICK OVER NICKEL PLATE PER QQ-N-290 IN CONTACT AREA.
- 4 TIN PLATE PER ASTM B 545 .000100 MIN THICK.
- 5 PART FITS INTO A #43 DRILLED HOLE ($\phi.0890 \pm .0015$) FOR HAND INSERTION, AND A #44 DRILLED HOLE ($\phi.0860 \pm .0015$) FOR MACHINE INSERTION.
- 6 .145 MIN INSERTION DEPTH REQUIRED FOR A RELIABLE CONNECTION.

7. SPRING TO BE SECURED IN CUP WITH NO SPRING ROTATION PERMISSIBLE.

8. LEAD RANGES AND PERFORMANCE RESULTS:

| LEAD RANGES (DIA) | .018-.020 | .025-.032 | .035-.040 |
|---------------------------|-----------|-----------|-----------|
| MAX INSERTION FORCE (OZ) | 17 | 37 | 48 |
| MIN EXTRACTION FORCE (OZ) | 1.0 | 1.5 | 2.0 |
| MILLIVOLT DROP (mV MAX) | 2.00 | 1.75 | 1.50 |



| | | |
|---------|--------|-----------|
| TIN 4 | TIN 2 | 5380635-5 |
| | GOLD 3 | 5380635-2 |
| CUP | SPRING | PART NO. |
| PLATING | | |

| | | | | |
|--|--|---------------------------------|---|-------------------------|
| THIS DRAWING IS A CONTROLLED DOCUMENT. | | DWN J. HAVENER 03NOV2005 | Tyco Electronics Corporation Harrisburg, PA 17105-3608 | |
| DIMENSIONS: INCHES | | CHK J. HAVENER 03NOV2005 | | |
| TOLERANCES UNLESS OTHERWISE SPECIFIED: | | APVD J. HAVENER 03NOV2005 | NAME REUSABLE COMPONENT RECEPTACLE | |
| 0 PLC ± - | | PRODUCT SPEC 108-1079 | SIZE A3 | |
| 1 PLC ± - | | APPLICATION SPEC 114-1055 | CAGE CODE 00779 | DRAWING NO C-5380635 |
| 2 PLC ± - | | WEIGHT - | RESTRICTED TO - | |
| 3 PLC ± .015 | | MATERIAL 1 | SCALE NTS | |
| 4 PLC ± - | | | SHEET 1 OF 1 | |
| ANGLES ± 1° | | CUSTOMER DRAWING | | REV A |
| FINISH SEE TABLE | | SCALE NTS | | |